

LV CONTROL

Capacitance Level Switch

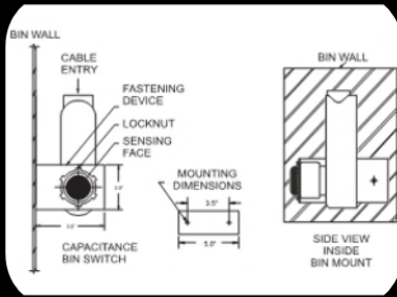


THE ONE SENSOR FOR ALL YOUR NEEDS!

- ✓ One-Touch Calibration
- ✓ Detects metallic and non-metallic targets without direct contact
- ✓ All models come standard with external status indication
- ✓ Internal sensitivity adjustment
- ✓ Increased noise immunity
- ✓ Enhanced moisture and temperature compensation
- ✓ Five amp switching capacity
- ✓ CSA and CSA_{us} Approved

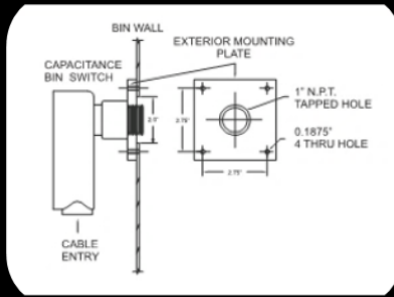
M
O
D
E
L
L
V
-
C
L
S

Methods of Installation:



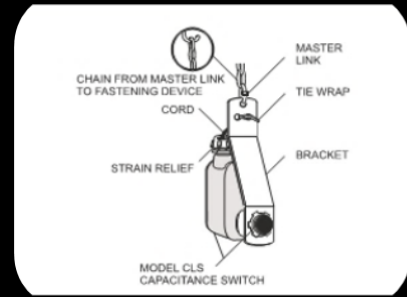
INSIDE BIN MOUNT – L BRACKET

This fastening device is designed to prevent product from being trapped between the bin wall and the sensing face, while at the same time allowing free access for wiring.



OUTSIDE BIN MOUNT – PVC FLANGE

A PVC flange allows external mounting of the sensor without the need of internal bin or hopper access.



SUPSENDED BRACKET ASSEMBLY

This method is used for suspending the sensor inside the bin. A chain provides for easy height adjustment should it become necessary for different materials.

Features and Benefits:

Flexible:

Detects ferrous and non-ferrous materials without direct contact.

Isolation:

Control contacts are fully isolated from the supply voltage.

Solid State Design:

No moving parts to wear out or replace.

Durable:

The water-tight housing is constructed of a flame-resistant, non-corrosive material.

Variable Sensitivity:

The internal adjustment allows fine-tuning to fit the application.

Field Terminals:

Allows for direct field connection without the need for a junction box.

Response Time:

Reliable, early detection of irregular conditions.

State Indication:

An LED constantly displays switch status.

Specifications:

Supply Voltage:

24 VAC/DC @ 3VA, 120VAC @ 16VA, or 220VAC @ 29VA

Contact ratings: Form C

5A @ 250 VAC / 5A @ 30VDC (Inductive)

Temperature Rating: -40C to 70C

Class 2, Div. 1 and 2, Group F & G, T4A

Warranty: 1 Year

Options:

Variable Voltage Interface: 24V DC, 24V AC, 120V AC

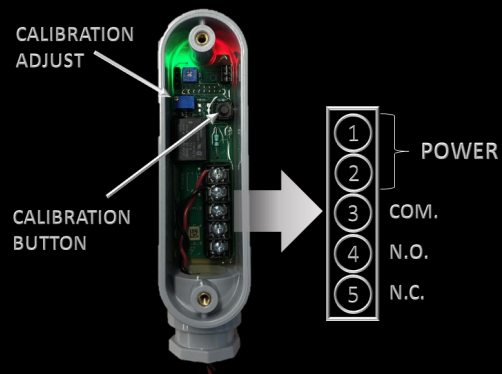
Metal "L" Bracket (As shown above)

PVC Mounting Flange (As shown above)

Suspended Mounting Bracket (As shown above)

Extra-Long nose sensor

Abrasion Protective Boot (available for long nose versions only)



WWW.LVCONTROL.COM

660 GOLSPIE STREET, WINNIPEG MANITOBA, R2K 2V1

(204) 669-3600