

LV CONTROL

Distributor Controller



Modern Ethernet-Based Controller

- ✓ Control Flat Back or Full Round Distributors
- ✓ Use as Standalone Controller or Integrate into an Existing Control System
- ✓ Compatible with:
 - Limit Based
 - Absolute Position Encoder
 - Analog Encoder
- ✓ Cost Effective Replacement for Strongco EDC/DC100 Hardware

M
O
D
E
L
P
D
C
-
1
0
0

Features and Benefits:

Standalone:

Use as standalone Controller

Integration:

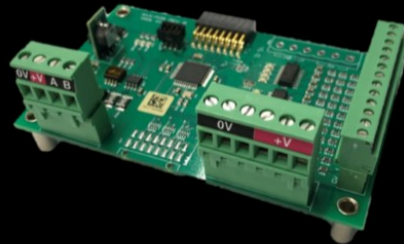
integrate into your existing control system via Modbus TCP/IP communication interface

Compatibility:

Compatible with all types of feedback options

Customizable:

Can be customized to meet your unique control system integration requirements



LIMIT/ENCODER
INTERFACE BOARD



HALL EFFECT
ENCODER

Strongco Upgrade Kit:

Cost Effective Replacement for DC100

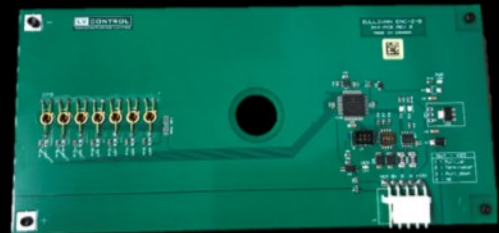
Kit includes:

- PDC100 c/w Ethernet (Standard) or PLC Discrete (Optional) Interfaces
- Opto Interface Board or Hall Effect Reader
- Interface drawings and user manual

Notes:

- 1) Multiple kits may be required for an EDC upgrade
- 2) Additional hardware is required for the PLC Discrete interface
- 3) PDC100 may not be compatible with some Strongco hardware
- 4) Requires installation of a new 3 Pair-18AWG Twisted Shielded Cable

Contact us for more information at Sales@LVControl.mb.ca



STRONGCO OPTO
INTERFACE BOARD

Specifications:

Supply Voltage: 12-24 VDC

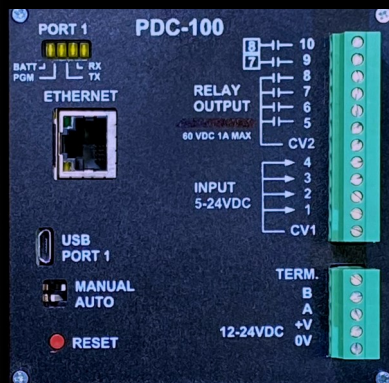
Communication: Modbus TCP/IP

Relay Contacts: 5A @ 24 VDC

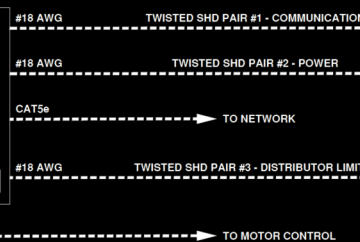
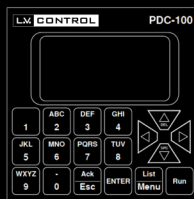
Temperature Rating: -40C to 70C

Warranty: 1 Year

Typical Installation Overview



CONTROL PANEL IN
CONTROL ROOM



JUNCTION BOX AT
DISTRIBUTOR

PDC-100 REMOTE
INPUT CARD

DISTRIBUTOR
LIMITS

FWD END L/S

REV END L/S

WWW.LVCONTROL.COM

660 GOLSPIE STREET, WINNIPEG MANITOBA, R2K 2V1

(204) 669-3600